

Conflict Explorer 2009

Installation guide

Table of Contents

1.	Introduction	2
2.	Limitations	2
3.	Installation	2
3.1	Requirements before installing	2
3.2	Installing using Setup.EXE	3
3.3	Installation troubleshooting	6
3.3.1	Errors when accessing SQL Server.....	6
3.3.2	Error messages during installation of SQL Server 2005 Express Edition	7
4.	Checking your SQL installation	7
4.1	Checking the settings of SQL Server Configuration Manager	7
4.1.1	Surface Area configuration.....	7
4.2	Configuring rights	9
4.2.1	Checking rights with SQL Server 2005 Management Studio	9
4.3	Firewall configuration.....	12
5.	Manual SQL Installation in Large Enterprises	14
5.1	Minimum Permissions on the Database	14
5.2	Automatic Installation using SetupCE.EXE	15

1. Introduction

This evaluation version enables you to set up a test install within your environment before purchasing the product. In addition, the evaluation version permits a real-world test of the software, since almost all functions are available immediately after installing the software. If you wish to purchase *Conflict Explorer 2009*, then you can activate the evaluation version after installing it (see *Deploying and Using Conflict Explorer 2009*, Chapter 5.17).

Please note: there is no separate full version of *Conflict Explorer 2009*. All limitations are removed once the test version has been activated.

2. Limitations

The evaluation version has the following limitations:

- A maximum of 30 software packages may be imported.
Warning: the likelihood of conflicts increases with the number of imported software packages. It is therefore easily possible that no truly major conflict effects will be identified with only 30 imported software packages. These would only be revealed later, after more software packages had been imported.
- Very large software packages and the operating system itself cannot be imported using the evaluation version.
- The evaluation version expires 60 days after being installed, and advises you to pay to activate the software.

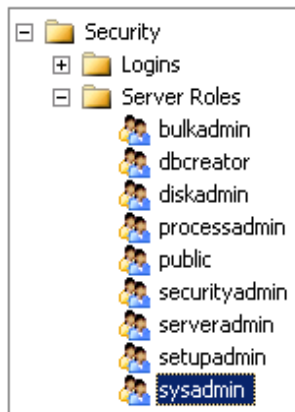
3. Installation

3.1 Requirements before installing

The installation and correct configuration of the *SQL Server* and its corresponding database is undoubtedly a complex and also critical process. Accordingly, we strongly recommend that you read through the following requirements documentation very carefully.

1. Installation of *Conflict Explorer 2009* requires the permissions "create" and "modify" on the network share where the software will be installed for shared usage. We do not recommend local installations in a company environment where there are multiple users! However, the program may be installed on a local hard disk for the purposes of individual testing.
2. The computer must have an installed copy of *.NET framework 2.0 SP1* or better. (For XP and Windows 2000, this will be installed by the *Conflict Explorer 2009* setup program as necessary. For Windows Vista, *.NET* must be installed manually via *Windows Update* or by installing *Microsoft .NET framework 3.5 SP1*.)
3. In addition, local administrator rights are needed on the client PC or server where *Conflict Explorer 2009* will be installed.
4. If your configuration involves a remote *SQL Server*, we recommend you also obtain temporary admin rights for this server. Any *firewall* used on the server will also need to be configured as necessary manually (see [4.3 Firewall configuration](#)), in order to open up the corresponding ports for use by the *SQL Server*. You will also need to activate remote administration for this server during setup, so that automatic database setup can work properly. See [http://msdn.microsoft.com/en-us/library/aa389286\(VS.85\).aspx](http://msdn.microsoft.com/en-us/library/aa389286(VS.85).aspx). However, if *SQL Server* has been installed on an English or German operating system, then you can skip the step mentioned above. If necessary, admin rights and remote administration can be revoked or deactivated after the installation process is complete.

5. **Before installing into an existing SQL Server environment, you must add the *installation account to the SQL Server Administrator role*** (see [4.2.1 SQL Server rights](#)), if you are not installing a copy of *SQL Server 2005 Express Edition* simultaneously as part of the setup process. Once installation has completed and the database has been created, the database administrator can then apply more restrictive permissions, as necessary.



3.2 Installing using Setup.EXE

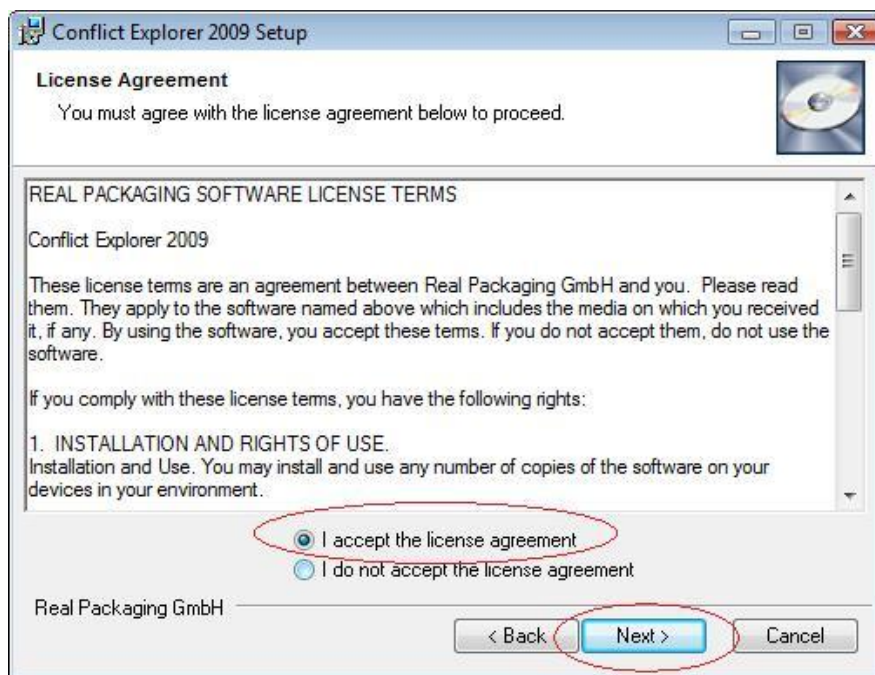
1. Download the setup file from the following location:
<http://www.realpackaging.ch/Download/SetupCE.EXE>
2. Start the installation, and do not mark the checkbox for the local install of *SQL Server Express Edition* if you intend to install the database on an existing *SQL Server* system. Select the option marked with a circle on the screenshot only if there is no available *SQL Server* in your environment. When installing *SQL Server 2005 Express Edition*, you can confirm all of the standard settings.



3. Choose "Next".



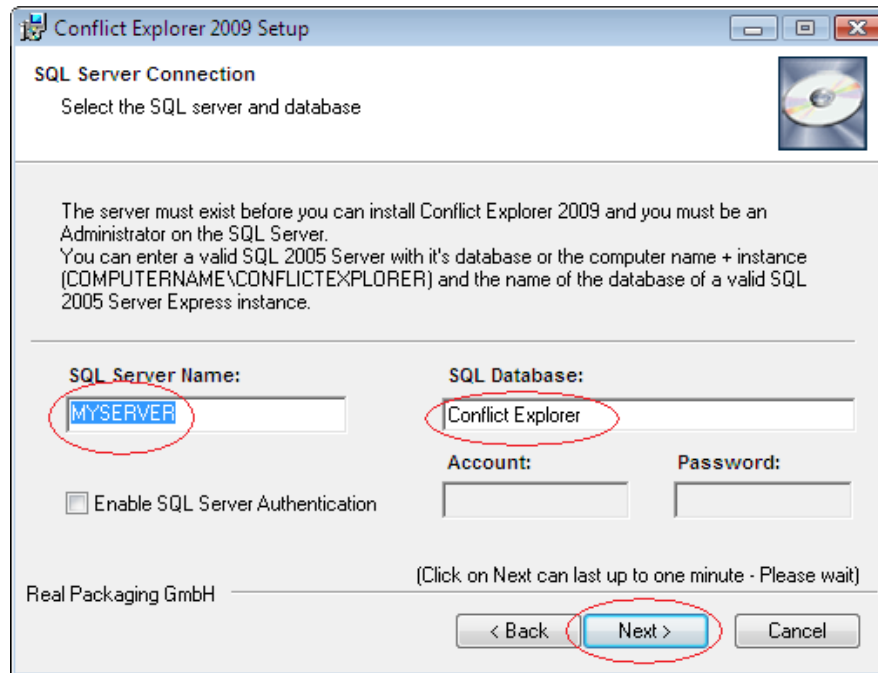
4. Read through and accept the license agreement. Choose "Next".



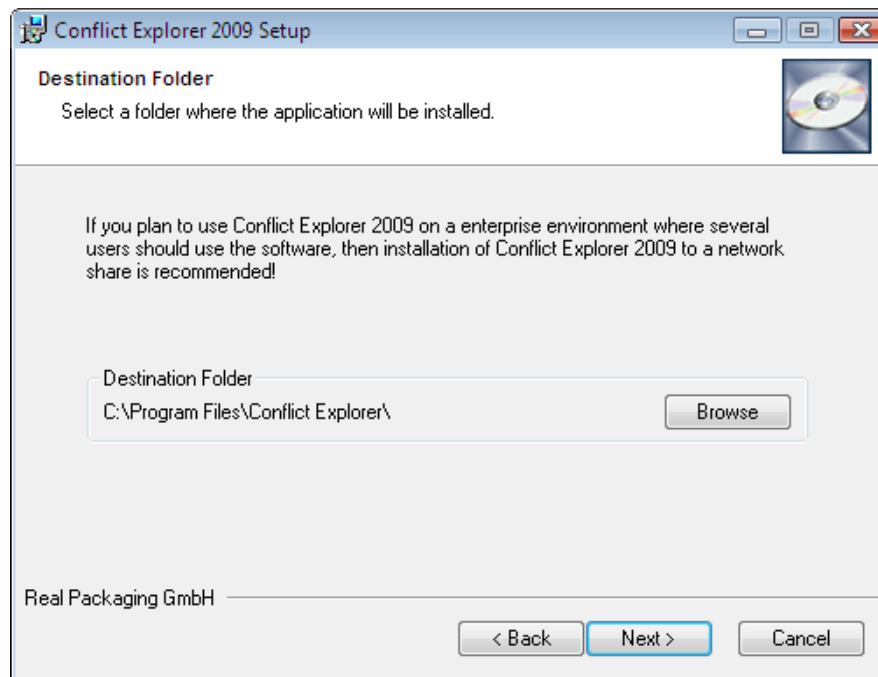
5. Enter the appropriate SQL Server name in the left-hand input field. Enter the database name in the same field. The default database name is set to *Conflict Explorer*.

As a rule, you should always use *Windows Authentication* (Standard) unless *Server Authentication* has been configured on your existing *SQL Server* system or your client PC/PCs is/are not registered within a domain!

Choose *Next* to continue. Setup now checks the supplied *SQL Server* details. If a connection can be made to the server, then the following screen is shown (Step 6). Please note that it may take up to a minute for Setup to continue after you have clicked on *Next*.



6. This screen is used to specify the target directory. As mentioned above, use of a network share is recommended if a team will be using the software. We recommend installing the software to your local hard drive only if you will be the sole user of the software.



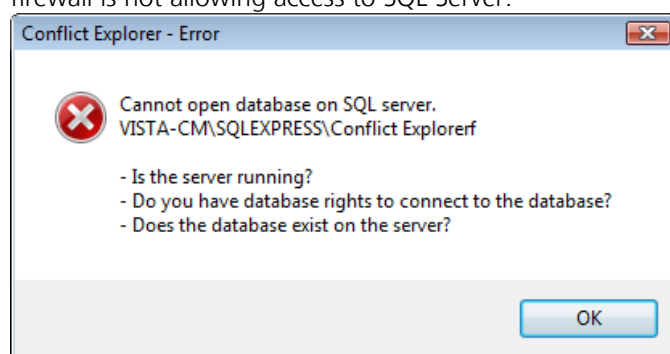
7. **Note: the script AddFullTrustingAndShortcuts.vbs from the *Client Setup* subdirectory must be executed on every computer intending to use *Conflict Explorer 2009* once installation has been completed successfully!**

3.3 Installation troubleshooting

During installation, the setup program creates a number of log files in `%TEMP%\Conflict Explorer`. The `SQLExpress.LOG` file is the log file for the *SQL Server 2005 Express Edition* install. Detailed information about the install of *Conflict Explorer 2009* can be found in the `ConflictExplorer.LOG` file. Three script files with the file extension `.sql` are also stored here. These are executed during the installation of *Conflict Explorer 2009*. These log files can also be analysed if you have installation problems.

3.3.1 Errors when accessing SQL Server

If, after installation, the following message appears when *Conflict Explorer 2009* is started, it means that the database has not been set up correctly on the server, the permissions are missing, or the firewall is not allowing access to SQL Server.



To locate the source of the error, you can start *Conflict Explorer 2009* directly from SQL Server as a database administrator. This allows you to circumvent the firewall as well as ruling out insufficient permissions on SQL Server as the cause of the problem. If it is now possible to run the program, then you have located the source of the error. Correct this.

If the problem remains unsolved and the installation has proceeded to completion, you can search the `ConflictExplorer.LOG` file for the entries `'1: execute script:...'`. These should appear shortly after `CustomAction CA_CreateDatabase` starts execution, that is, after the log entry: `'Executing op: ActionStart(Name=CA_CreateDatabase,,)'`.

The lines (three in total) have the following form:

```
1: execute script: "C:\Program Files\Microsoft SQL Server\90\Tools\binn\SQLCMD.EXE" -S XP-  
CM\CONFLICTEXPLORER /i "C:\DOCUME~1\oberlind\LOCALS~1\Temp\Conflict  
Explorer\AddDomainUsersAndRole.sql"
```

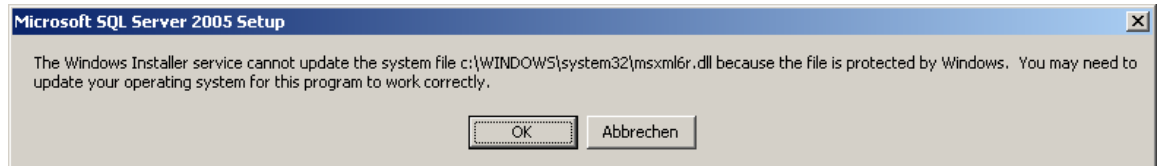
You should now try to start `cmd.exe` in order to execute just these three scripts again. To do so, simply copy the complete text string from the log file that follows `1: execute script`, paste it into a DOS window and execute the command line. In this way, you may already be able to pinpoint the error.

If not, then you should use *Microsoft SQL Server 2005 Management Studio* on the SQL Server – or on the client PC, if you have installed *SQL Server 2005 Express* locally – to confirm that the *Conflict Explorer* database exists and to check the permissions configured for it. *Microsoft SQL Server 2005 Management Studio Express* can be downloaded free of charge. Just search on the web for *Microsoft SQL Server 2005 Management Studio Express*.

Check the `SQL` process and the `SQL Server` according to the instructions provided in Chapter [4.1 Checking your SQL installation](#).

3.3.2 Error messages during installation of SQL Server 2005 Express Edition

On some systems, the following error message appears while installing *Microsoft SQL Server 2005 Express Edition*:



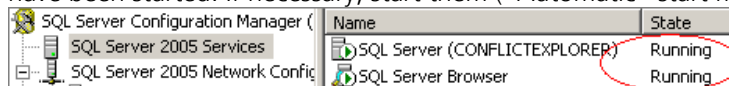
You may safely ignore this error message and close the popup box by clicking "OK".

4. Checking your SQL installation

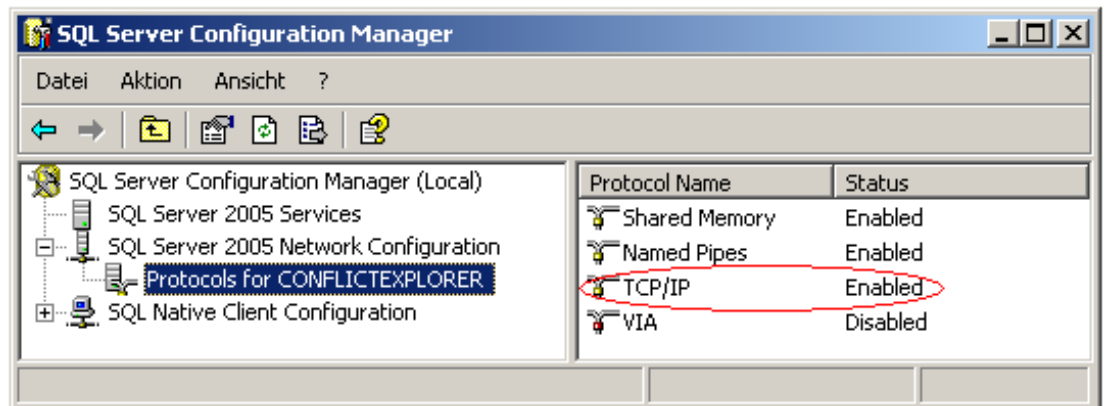
4.1 Checking the settings of SQL Server Configuration Manager

To ensure that an *SQL Server* process can be reached over the network, you must configure network protocols or activate them as necessary. To do so, complete the following steps:

1. Go to *Start/Programs/Microsoft SQL Server 2005/Configuration Tools*
2. Now select *SQL Server Configuration Manager*
3. Locate *SQL Server 2005 Services* and check whether the *SQL Server* and *SQL Server Browser* have been started. If necessary, start them ("Automatic" start mode)



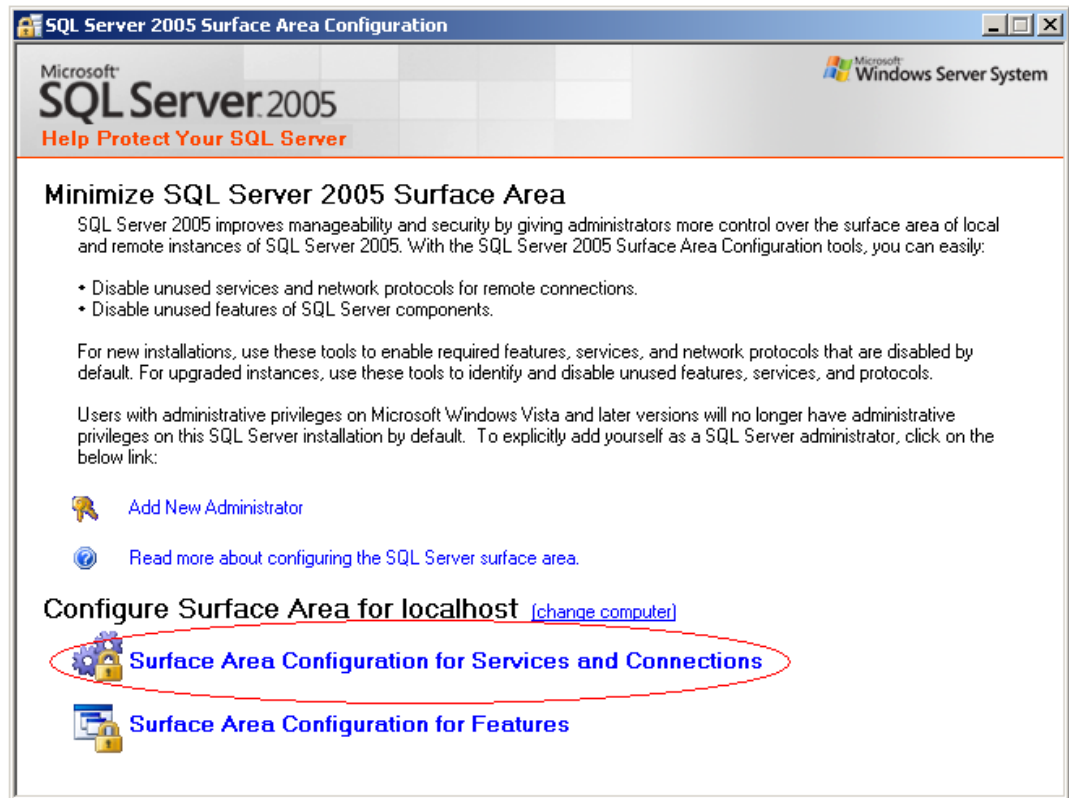
4. Now expand the *SQL Server 2005 Network Configuration* sub-tree in the left-hand tree view and click on *Protocols for CONFLICTEXPLORER*.
5. Right-click on *TCP/IP* and activate this protocol.



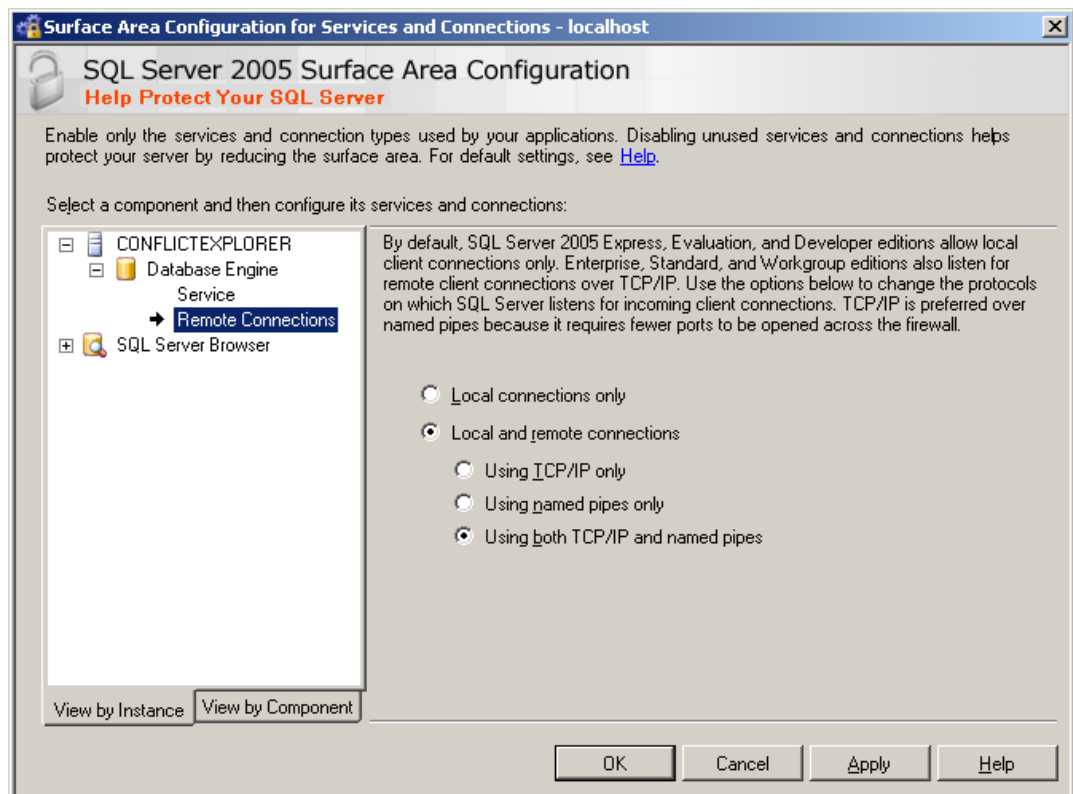
6. If you receive a message asking you to restart the *SQL* service, go to the *SQL Server 2005 Service* entry, stop *SQL Server* and *SQL Browser* and then restart both services. Before finishing, confirm that both services have been restarted successfully.

4.1.1 Surface Area configuration

1. Go to *Start/Programs/Microsoft SQL Server 2005/Configuration Tools*
2. Now select *SQL Server Surface Area Configuration*
3. Select *SQL Server Surface Area Configuration for Services and Connections*



4. Expand the *Database Engine* tree item, click on *Remote Connections*, and then compare your settings to the following screenshot.

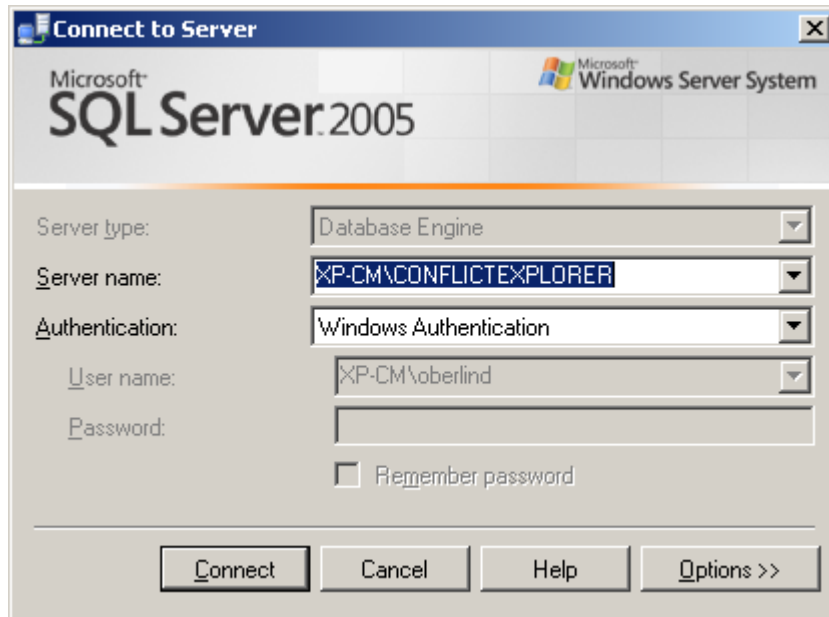


4.2 Configuring rights

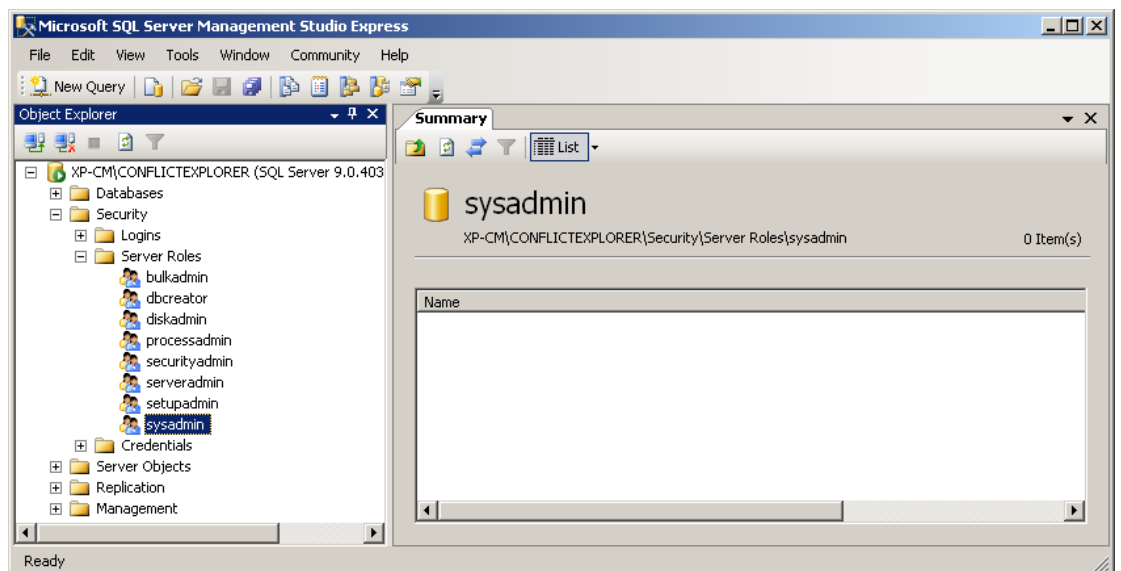
4.2.1 Checking rights with SQL Server 2005 Management Studio

If you have installed Microsoft SQL Server 2005 Express, you can download *SQL Server Management Studio Express* free of charge from the web.

1. Go to *Start/Programs/Microsoft SQL Server 2005/SQL Server Management Studio* and log in via *Windows Authentication*.

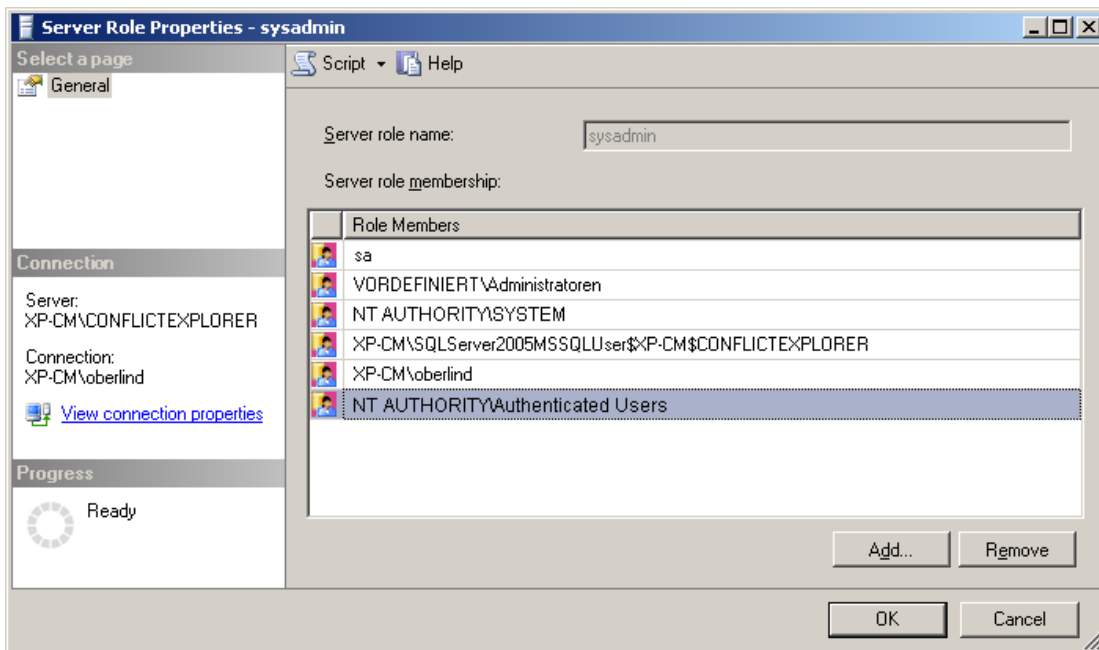


2. Expand the tree item *Security/Server Roles/sysadmin*

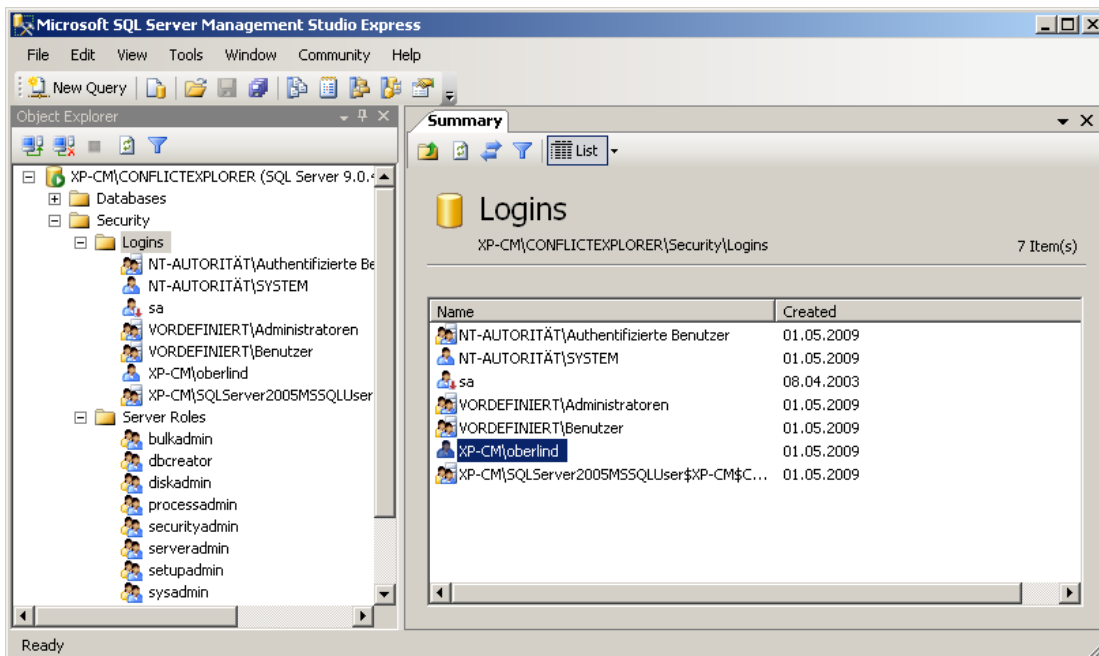


3. Double-click on the tree item *sysadmin*.

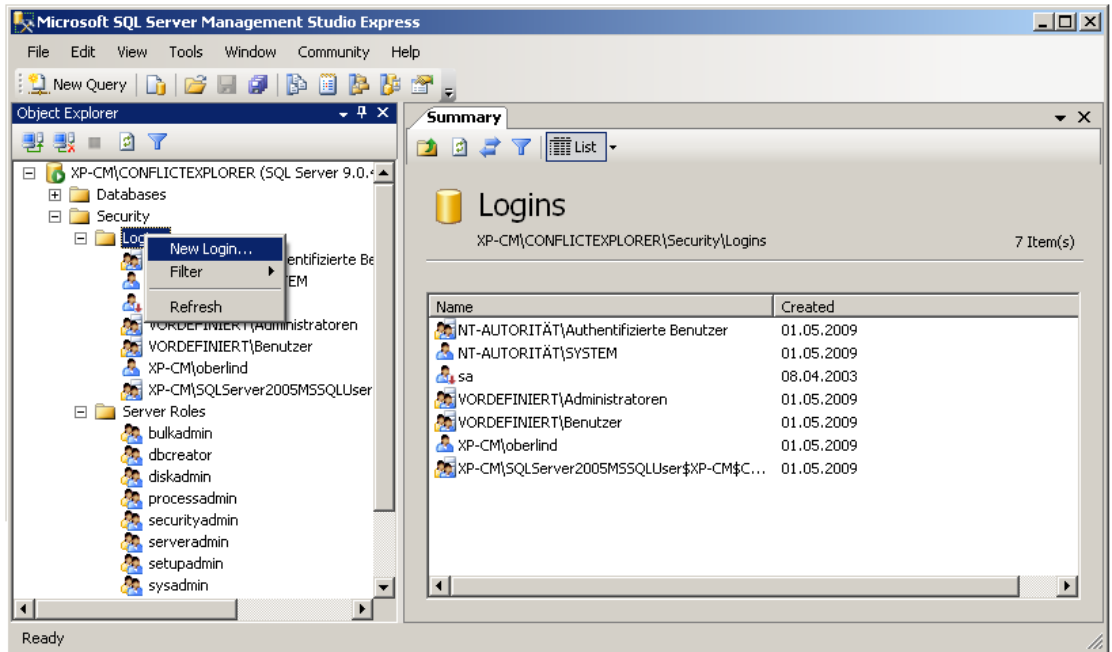
- This expands the properties of the *server role* and shows you the rights associated with the *sysadmin* server role.



- Check that the groups listed include the user that you have selected for *Conflict Explorer 2009*. If this is true, then you can close *SQL Server Management Studio*.
- If not, then click on the *Logins* tree item and check that the group name that you selected previously appears in the right-hand window pane. If this is true, then double-click on this entry and continue with Step 14 below.



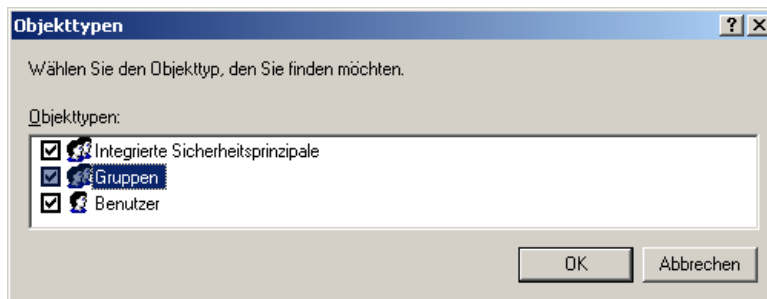
- If not, then right-click on the *Logins* tree item and choose *New Login...*



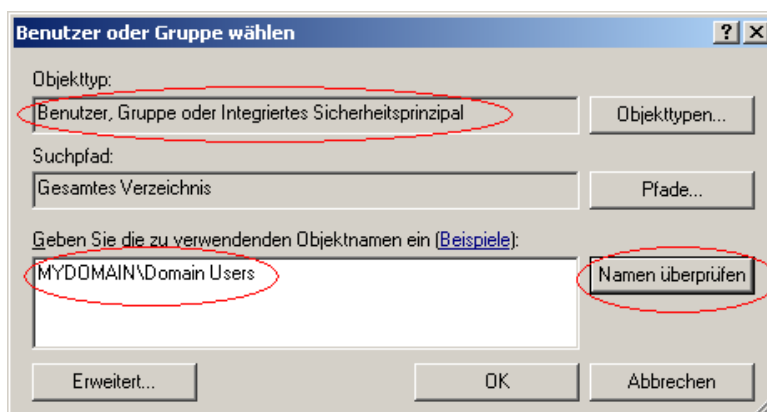
8. In the screen that is presented to you, choose *Search...* (top right).
9. Then choose *Object Types*



10. Confirm that all *Object Types* are checked. Confirm any changes with *OK*.



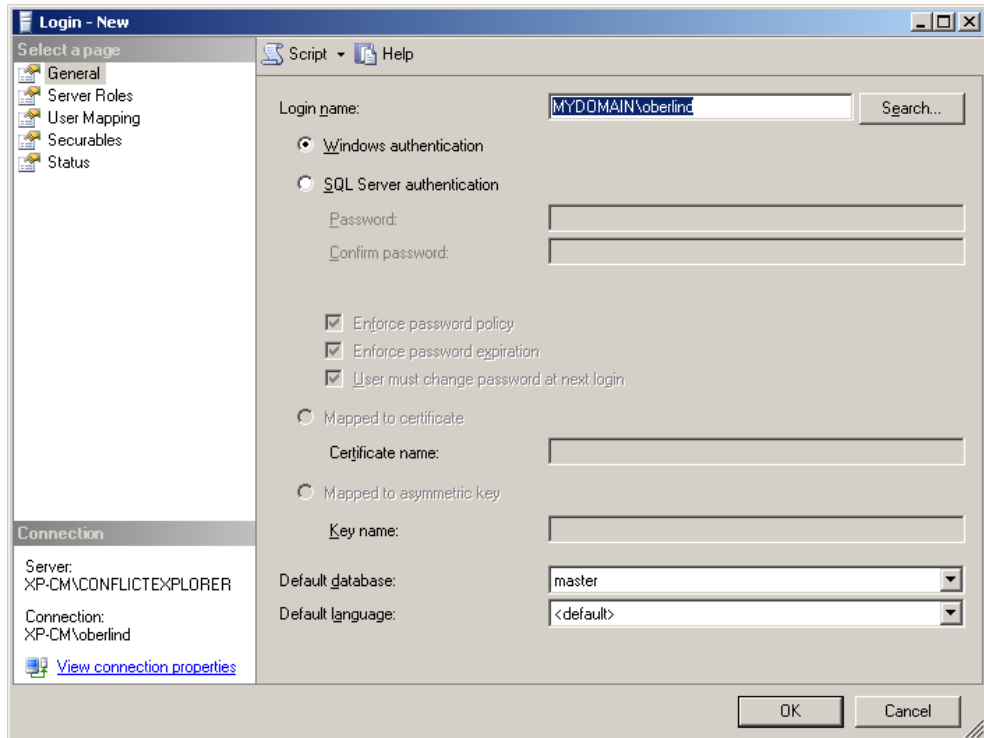
11. Enter the *object name* you want to assign in the input field. For example: *DOMAIN\Domain Users* (using a domain controller with an English language pack). Verify the name using the button on the right.



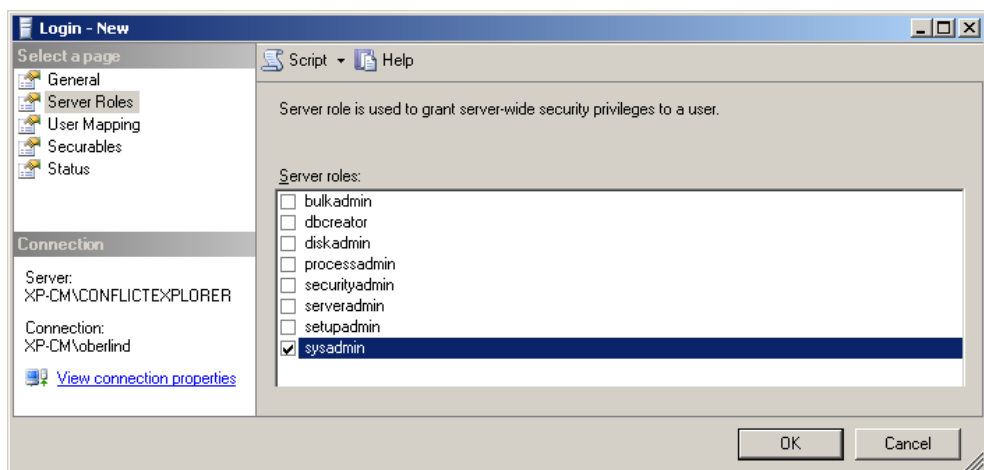
12. If required, you can use the *Advanced...* button to search through the entire *directory* for *object names*.



13. Confirm your input with OK



14. Under *Server Roles*, mark *sysadmin* and confirm the operation with *OK*.



4.3 Firewall configuration

Please be advised that opening ports in your network can lead to security risks. Run appropriate security assessment procedures before opening any of your ports! However, you must ensure that the database server port is not closed. Also check the *firewall* settings for your *SQL Server*.

To ensure trouble-free operation with *SQL Server 2005* or *SQL Server 2005 Express*, the following strategy should be used. (Important: if your company has group policies in place that do not permit

any *firewall* exceptions or which overrule any such exceptions, then you will need to consult your domain administrator!)

1. Select *Start/Control Panel/Windows Firewall* on the computer where *SQL Server 2005* or *SQL Server 2005 Express* has been installed.



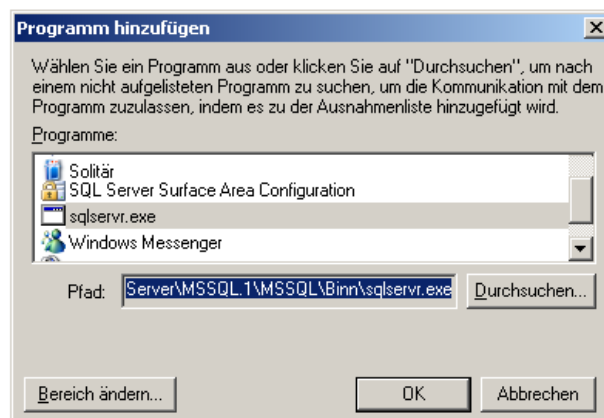
2. If *Windows Firewall* has been activated, then select *Exceptions*



3. If you cannot find any entries listing *SQL Server*, then you should create two exceptions:
4. Click on *Add Program...* and then on *Browse...*



5. Now choose the application file *sqlserver.exe* (found as standard under *C:\Program Files\Microsoft SQL Server\MSSQL.1\MSSQL\Binn\sqlservr.exe*)



6. Confirm with *OK* and then choose *Add Port...*
7. Fill in the form to match the screenshot shown below, and confirm by clicking *OK*.

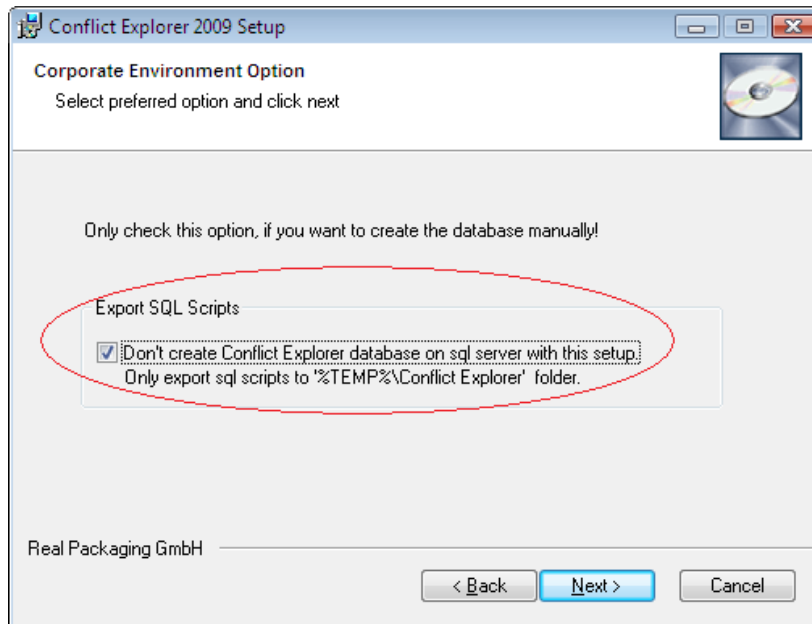


8. Complete the firewall configuration process by clicking *OK*.

5. Manual SQL Installation in Large Enterprises

The program *SetupCE.EXE* included with *Conflict Explorer 2009* can also be used when automatic creation of the database on SQL Server is not wanted. A manual setup procedure performed **afterwards** allows you to implement your company policy as closely as possible.

Before setting up the SQL database, install *Conflict Explorer 2009* as usual by executing the *SetupCE.EXE* file. After entering the server and the database, the following dialog appears. Choose the following option here:



This results in the creation of 3 scripts in the directory `%TEMP%\Conflict Explorer` after the *Conflict Explorer* setup program has finished.

1. AddDomainUsersAndRole.sql (creates group permissions)
2. ConflictExplorerDB.sql (creates database)
3. script_ohneviews_with-Indexes.sql (creates database tables)

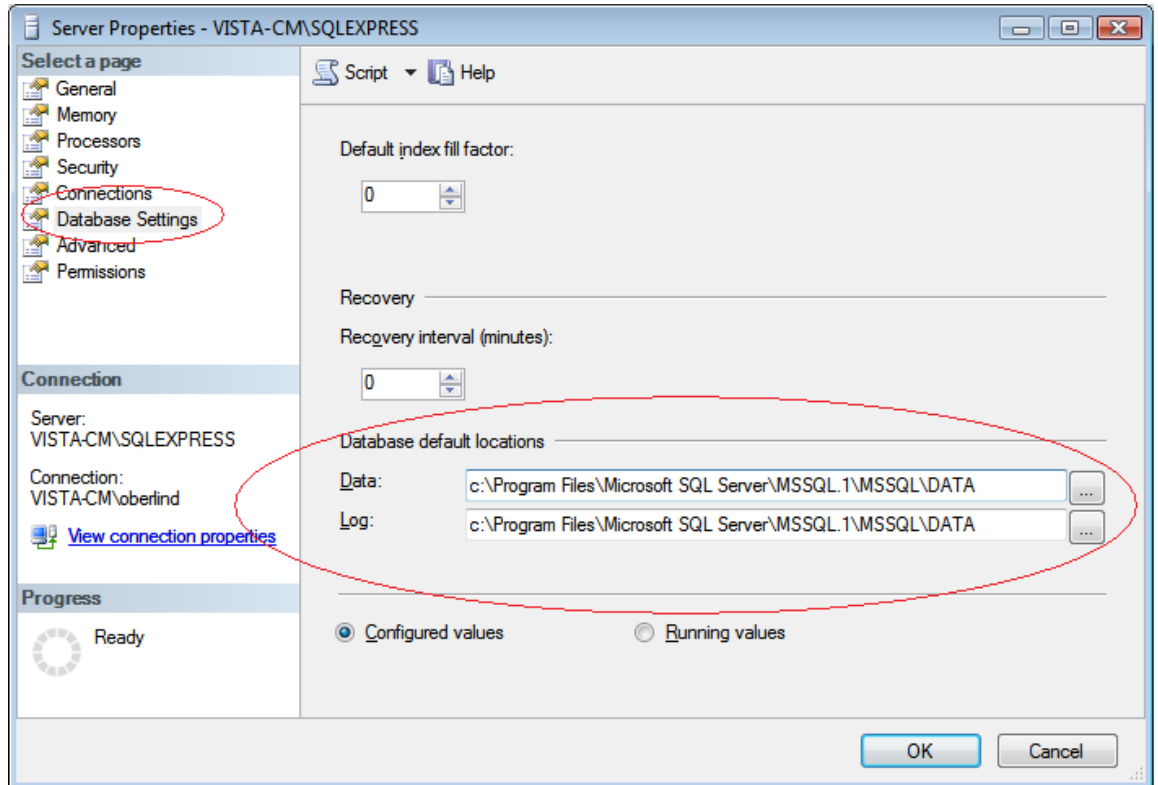
Should you wish to set up the database yourself, you can now create it manually on the server in accordance with your policy. When doing so, use the same name that you entered in the setup dialog under *SQL database* ("Conflict Explorer" is the default). Once the database has been set up, you can finally use Script 3. *script_ohneviews_with-Indexes.sql*, to set up the tables. Check also that the entries under *Server* and *Database* in the *Settings.INI* file in the directory where you installed *Conflict Explorer 2009* are correct.

5.1 Minimum Permissions on the Database

The group of users that will be using *Conflict Explorer 2009* must have at least **dbowner** rights on the database. In addition, the group must be granted the **VIEW SERVER STATE** right on SQL Server.

5.2 Automatic Installation using SetupCE.EXE

Complete installation using *SetupCE.EXE* is recommended as a rule. If company policies with regard to restrictions on permissions are violated by the setup procedure, these permission profiles can still be amended after automatic database creation. Be sure to pay attention to Section [5.1 Minimum Permissions on the Database](#). During automatic installation, the standard paths defined in SQL Server are used. That means that the *Conflict Explorer* database is also created at this location.



Conflict Explorer 2009 is a trademark of Real Packaging GmbH. All other company, brand and product names cited in this document are trademarks, registered trademarks or brand names of their respective owners.